

Coocable

Solar Cables | PV Accessories

Shanghai Kuka Intelligent Technology Co., Ltd.

Enterprise



COOCABLE is one of the independent brands of Shanghai KUKA special cable Co., Ltd. It has a leading cable design and R & D laboratory, focuses on cable R & D and manufacturing, and provides cable customization services for users all over the world. By 2022, it has served more than 100 regions and countries, and its products range from household wires, industrial cables to various types of special cables. We accept the cable customization needs from customers in various regions and provide customer service for your matching exclusive products. We will give priority to your product quotation, sample delivery, receipt and delivery services, etc. With the service tenet of reply in 10 minutes, quotation on the same day and delivery in the fastest seven days, COOCABLE can easily build a global cable trade chain for you. Buy cable and choose COOCABLE, the cable customization expert around you.

Team

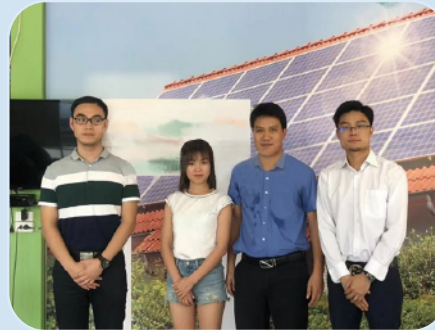


Cooperation Case

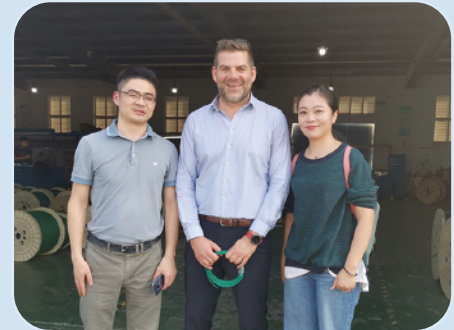
Participated in more than 200 large and small photovoltaic projects around the world,
and photovoltaic products have received high praise



Cooperation with global top 500
well-known enterprises



85mW photovoltaic power station
project in Australia



Vietnam 50MW photovoltaic agricultural
technology greenhouse project

Factory



Product certificate



Currently we have ten production lines for solar cable, with daily capacity over 500KM. And rigid and comprehensive inspection programs to insure the quality.

Laboratory and Testing facilities



Independent cable design and R&D laboratory, focusing on cable R&D and manufacturing, supporting various cable customization services



Solar cable H1Z2Z2-K



Applications

Double insulated, electron-beam cross-linked cables for photovoltaic power applications.

Construction

Conductor	Tinned fine copper strands acc.to VDE 0295/IEC 60228, Class 5.
Insulation	XLPO, flame retardant, halogen free electron-beam cross-linked.
Jacket	XLPO, flame retardant, halogen free, electron-beam cross-linked.
Insulation color	● black
Jacket color	● black or ● red

Advantages

- Double insulated Electron-beam cross-linked compounds
- Meter marking - easy installation
- UV, ozone and hydrolysis resistant
- Compatible to all connectors
- Halogen free, flame retardant
- Flexible, easy to strip

Mechanical feature

Bending radius	4 x outer diameters
Temperature range	-40°C to +90°C, Max.temp. at conductor +120°C
Short circuit temperature	250°C for 5 s
Flame-resistant test	acc.to EN 60332-1-2
Anticipated service life	25years

Electrical characteristics

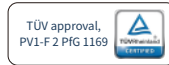
Rated voltage	DC 1500 V AC U ₀ /U:1.0/1.0 kV
max.permitted voltage	U ₀ 1800 V DC
Insulation resistance	1000MΩ/KM
Test Voltage(AC)	AC 6. 5kV, 50Hz, 5 min

Mechanical feature

Cross section (nxmm ²)	Conductor Ø (mm)	Outer Ø (mm)	Current-carrying capacity [A] at 60°C	Conductor resistance kΩ/ km at 20°C	Cable Code
1x1.5	1.5	4.3	30	13.7	PV302515
1x2.5	2.0	5.2	42	8.21	PV502525
1x4.0	2.5	5.5	55	5.09	PV562940
1x6.0	3.3	6.3	70	3.39	PV842960
1x10.0	4.3	7.8	98	1.95	PV142301
1x16.0	5.3	9.2	132	1.24	PV228301
1x25.0	6.6	11.3	176	0.795	PV361302
1x35.0	7.8	13.3	218	0.565	PV525303
1x50.0	9.3	14.8	280	0.393	PV720305
1x70.0	11.4	16.9	350	0.277	PV988307
1x95.0	12.8	18.7	410	0.210	PV134930
1x120.0	14.6	20.7	480	0.164	PV1 69130

*Dimensions and specifications may be changed without prior notice.

Solar cable PV1-F



Applications

Double insulated, electron-beam cross-linked cables for photovoltaic power applications.

Construction

Conductor	Tinned fine copper strands acc.to VDE 0295/IEC 60228, Class 5.
Insulation	XLPO, flame retardant, halogen free electron-beam cross-linked.
Jacket	XLPO, flame retardant, halogen free electron-beam cross-linked.
Insulation color	● black
Jacket color	● black or ● red

Advantages

- Double insulated Electron-beam cross-linked compounds
- Meter marking - easy installation
- UV, ozone and hydrolysis resistant
- Compatible to all connectors
- Halogen free, flame retardant
- Flexible, easy to strip

Mechanical feature

Bending radius	4 x Ø outer diameters
Temperature range	-40°C to +90°C, Max.temp. at conductor+120°C
Short circuit temperature	250°C for 5 s
Flame-resistant test	acc.to EN 60332-1-2
Anticipated service life	25years

Electrical characteristics

Rated voltage	DC 1kV AC U ₀ /U: 0.6/1.0 kV
max.permitted voltage	U ₀ 1800 V DC
Insulation resistance	1000MΩ/KM
Test Voltage(AC)	AC 6. 5kV, 50Hz, 5 min

Mechanical feature

Cross section (nxmm ²)	Conductor Ø (mm)	Outer Ø (mm)	Current-carrying capacity [A] at 60°C	Conductor resistance kΩ/ km at 20°C	Cable Code
1x1.5	1.4	4.2	30	13.7	PV302515
1x2.5	1.8	5.0	42	8.21	PV502525
1x4.0	2.2	5.2	55	5.09	PV562940
1x6.0	2.8	5.8	70	3.39	PV842960
1x10.0	4.0	7.5	98	1.95	PV142301
1x16.0	5.0	8.9	132	1.24	PV228301
1x25.0	6.2	10.9	176	0.795	PV361302
1x35.0	7.3	12.8	218	0.565	PV525303
1x50.0	8.8	14.3	280	0.393	PV720305
1x70.0	11.0	16.5	350	0.277	PV988307
1x95.0	12.3	18.2	410	0.210	PV134930
1x120.0	14.1	20.2	480	0.164	PV1 69130

*Dimensions and specifications may be changed without prior notice.

Packaging details of conventional solar Cable

solar Cable

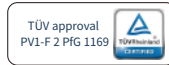
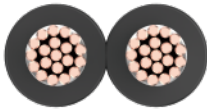
Model and specification (MM2)	external diameter	weight	50m hollow volume (21*8cm)	100m hollow volume (25*8cm)	200m hollow volume (35*10cm)	250m hollow volume (35*12cm)	50m ON Plastic (20*8cm)	100m ON Plastic (22*14cm)	200m ON Plastic (28*17cm)	500m Wooden plate (35*33cm)	1000m Wooden plate (50*33cm)
PV1-F/ H1Z2Z2-K 1X4	5.5m	59KG/KM	300 rolls / pallet	192rolls / pallet	90rolls / pallet	72rolls / pallet	300rolls / pallet	175rolls / pallet	80rolls / pallet	27rolls / pallet	12rolls / pallet
PV1-F/ H1Z2Z2-K 1X4	6.0m	64KG/KM	300 rolls / pallet	192rolls / pallet	90rolls / pallet	72rolls / pallet	300rolls / pallet	175rolls / pallet	80rolls / pallet	27rolls / pallet	12rolls / pallet
PV1-F/ H1Z2Z2-K 1X6	5.8m	74KG/KM	300 rolls / pallet	192rolls / pallet	90rolls / pallet	72rolls / pallet	300rolls / pallet	175rolls / pallet	80rolls / pallet	27rolls / pallet	12rolls / pallet
PV1-F/ H1Z2Z2-K 1X6	6.0m	77KG/KM	300 rolls / pallet	192rolls / pallet	90rolls / pallet	72rolls / pallet	300rolls / pallet	175rolls / pallet	80rolls / pallet	27rolls / pallet	12rolls / pallet

Color: The conventional single-core insulation is black, and the sheath is red and black.

Printing: Customized according to customer requirements.

Conventional wooden support: 1.12*1.12M (wood support + cover plate: 30kg) **350 wooden shaft:** 3kg 500 wooden shaft: 5kg

Solar cable twin-core



Applications

Double insulated, electron-beam cross-linked cables for photovoltaic power applications.

Construction

Conductor	Tinned fine copper strands acc.to VDE 0295/IEC 60228, Class 5.
Insulation	XLPO, flame retardant, halogen free electron-beam cross-linked.
Jacket	XLPO, flame retardant, halogen free electron-beam cross-linked.
Insulation color	● black and ● red
Jacket color	●● black with red strip

Advantages

- Double insulated Electron-beam cross-linked compounds
- Meter marking - easy installation
- UV, ozone and hydrolysis resistant
- Compatible to all connectors
- Halogen free, flame retardant
- Flexible, easy to strip

Mechanical feature

Bending radius	4 x Ø outer diameters
Temperature range	-40°C to +90°C, Max.temp. at conductor+120°C
Short circuit temperature	250°C for 5 s
Flame-resistant test	acc.to EN 60332-1-2
Anticipated service life	25years

Electrical characteristics

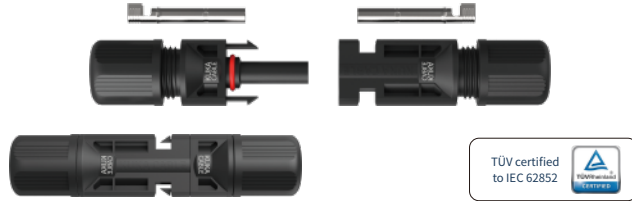
Rated voltage	DC 1.5kV AC U ₀ /U: 0.6/1.0 kV
max.permitted voltage	U ₀ 1800 V DC
Insulation resistance	1000MΩ/KM
Test Voltage(AC)	AC 6. 5kV, 50Hz, 5 min

Mechanical feature

Cross section (nxmm ²)	Conductor Ø (mm)	Outer Ø (mm)	Current-carrying capacity [A] at 60°C	Conductor resistance kΩ/ km at 20°C	Cable Code
2x1.5	1.5	4.3x8.8	30	13.7	PV2F3025
2x2.5	2.0	5.2x10.6	42	8.21	PV2F5025
2x4.0	2.5	5.5x11.2	55	5.09	PV2F5629
2x6.0	3.3	6.3x12.8	70	3.39	PV2F8429
2x10.0	4.3	7.8x15.8	98	1.95	PV2F1423
2x16.0	5.3	9.2x18.6	132	1.24	PV2F2283
2x25.0	6.6	11.3x22.8	176	0.795	PV2F3613
2x35.0	7.8	13.3x26.8	218	0.565	PV2F5253
2x50.0	9.3	14.8x29.8	280	0.393	PV2F7203
2x70.0	11.4	16.9x34.0	350	0.277	PV2F9883

*Dimensions and specifications may be changed without prior notice.

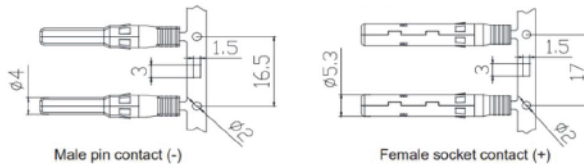
MC4 connector 1500V



Advantages

- Efficient snap in locking system for easy and safe install
- Accomodate PV cables with vary diameters
- High current carrying capacity
- Reliable in harsh conditions
- IP68 water proof and dust proof
- Low transition resistance

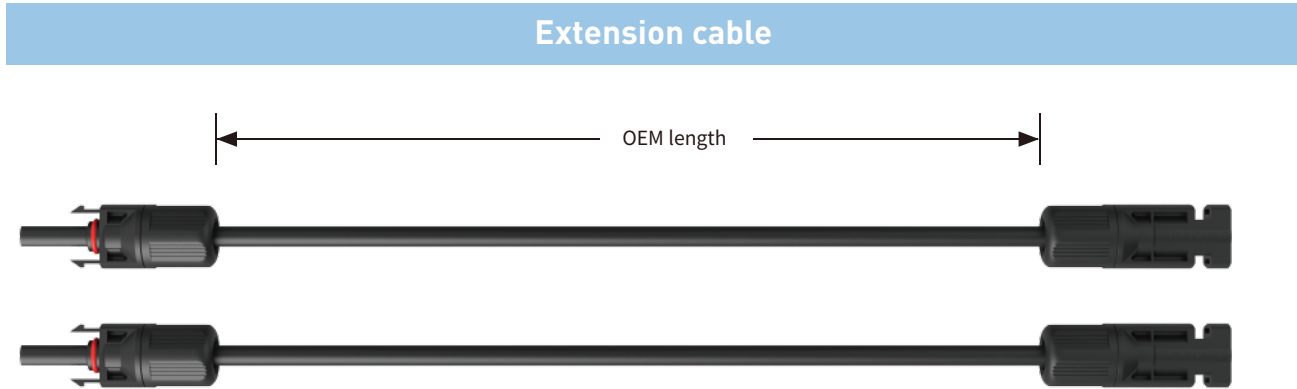
Construction



Technical data

Rated voltage	1500V DC
Rated current (per IEC 62852, 85°C)	17A (1.5mm ²) 22.5A (2.5mm ²) 30A (4.0mm ² , 6.0mm ²) 40A(10.0mm ²)
Test voltage	16kV(50Hz, 1min.)
Contact maerial	Tin-plated Copper Alloy
Contact resistance	$\geq 0, \leq 0.25m\Omega$
Insulation material	PPO
Locking system	Snap-in
Operating Temp. Range	-40°C to 90°C
Overvoltage category /Pollution degree	CAT III/2
Protection Degree	IP68
Flame class	UL-94-V0
Type of termination	Crimping
Contact system	NEC Locking Type
Cable OD range	4.5mm - 7.8mm

Extension cable & Y-type connector



Mechanical feature

Product name	Part- Cable size	Part- Cable length	Part- Connector
Extension cable	2.5mm ² /4.0mm ² /6.0mm ²	Cusotmized on request	1000V or 1500V MC4

Solar cable two core series

MODEL SPECIFICATIONS	OUTER DIAMETER	WEIGHT	100M INTEGRAL BLUE PLASTIC TRAY
PV1-F/H1Z2Z2-K 2x4	4.7*9.6mm	100KG/KM	220*85*220
PV1-F/H1Z2Z2-K 2x6	5.5*11.4mm	144KG/KM	280*105*170
Color:The conventional double-core insulation is red and black, and the sheath is black or single-sided with red wire.			
Printing: Customized according to customer requirements.			
Packaging Specifications	Conventional wooden support: 1.12*1.12M (wood support + cover plate: 30kg)		
	2*4 100 axles per pallet	2*6 80 axles per pallet	

Shanghai Kuka Intelligent Technology Co., Ltd

No. 13-14, 5878 Nanting Road, Tinglin Town, Jinshan District, Shanghai

TEL: 021-37110083

E-mail: sales@coocable.com

www.coocable.com



 0086 1831710 9559

 sales@kukacable.com

 www.coocable.com

 No. 5878, Tingwei Road, Jinshan District, Shanghai, China